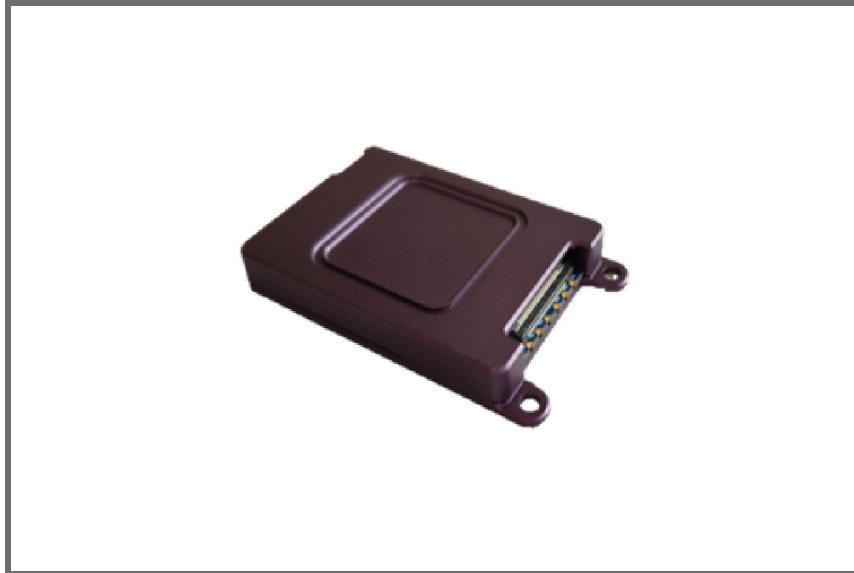




Ci-RM1 One Port UHF RFID Module



Ci-RM1 is high performance one port UHF RFID Reader Module, with IMPINJ R2000 RF chips, super ant collision function. Powered from + 5 V DC to 15V DC. It is small in size and supported by a suite of software, hardware, and antennas that deliver application and deployment flexibility, making installation and expansion easier than ever.

FEATURES

- ☑ ISO18000-6C (EPC Class1 GEN2) Protocol
- ☑ Impinj R2000 RFID Chip, Super Anti-Collision Function
- ☑ UART TTL Communication Port
- ☑ 30PIN FPC, Stamp Holes Different Connectors Available
- ☑ 1 MMCX RF Port
- ☑ DC 5V to 15V Power Supply, Small in Size, Easy to Embed Into Other Device
- ☑ C#, Java, Android SDK Available



PARAMETERS

Operating Frequency	902 - 928MHz, 865 - 868MHz, RF band customized (optional)
Protocol	ISO18000-6C (EPC Class1 Gen2)
Modulation	DSB-ASK, PR-ASK
Antenna Port	1 MMCX RF port
Rf Output	0dBm~ 33dBm @50Ω load, 1dBm each step
Reading Range	0~15m (depends on antenna and tag type)
Writing Range	0~5m (depends on antenna and tag type)
Reading Speed	300pcs/s
Communication Port	UART TTL
Indicator	1 LED power indicator
Power Supply	5V DC(5V~17V DC)
Power Consumption	1.3A/5V@30dBm reading state
Dimension	60 *40 *3.8mm
Weight	50g
Working Temperature	-30°C~65°C
Storage Temperature	-40°C~80°C

WRITING DIAGRAM STAMP HOLES

Name	Type	Description
VCC	Power input	DC 5V-17V
GND	Ground	Ground
UART_RXD	RXD	UART TTL Receive
UART_TXD	TXD	UART Transit
RF OUT1	Antenna port1	RF antenna port1, can weld antenna
RF OUT 2	Antenna port 2	MMCX RF antenna port
30pin FPC Connector		
Name	Type	Description
1, 2, 3, 4	GND	GND



5	GND	Power Ground
6	VCC	Power input, DC 5V-17V
7, 8, 9, 10, 11, 12, 13, 14, 15	VCC	VCC
16, 17, 18, 19, 20	GND	GND
21	UART_RXD	TTL UART Receive
22	UART_TXD	TTL UART Transit
23	EN	Enable
24	GPIO 1	Input/Output 1
25	Buzzer	Connect outsider buzzer
26	GPIO 3	Input/Output 3
27	GPIO 4	Input/Output 4
28	GPIO 5	Input/Output 5
29, 30	GND	GND



Ci-RM4 4 Ports UHF RFID Module



Ci-RM4 is a high-performance, 4-antenna-port, UHF RFID Reader module supporting ISO18000-6C (EPC Class1 GEN2) Protocol. Designed with Impinj R2000 RFID chip. Supported by a suite of software, hardware, and antennas that deliver application and deployment flexibility, making installation and expansion easier than ever.

FEATURES

- ☑ ISO18000-6C (EPC Class1 GEN2) Protocol
- ☑ Impinj R2000 RFID Chip, Super Anti-Collision Function
- ☑ UART TTL Communication Port
- ☑ 15PIN 1.25mm Connector
- ☑ 4 SMA-Female Ports
- ☑ C#, Java, Android SDK Available



PARAMETERS

Operating Frequency	902-928MHz, 865-868MHz, RF band customized (optional)
Protocol	ISO18000-6C (EPC Class1 Gen2)
Modulation	DSB-ASK, PR-ASK
Antenna Port	4 SMA-Female
Rf Output	0dBm~ 33dBm @50Ω load, 1dBm each step
Reading Range	0~15m (depends on antenna and tag type)
Writing Range	0~5m (depends on antenna and tag type)
Reading Speed	300pcs/s
Communication Port	UART TTL
Io Port	5 GPIO
Power Supply	5V DC(5V~17V DC)
Power Consumption	4A/5V@30dBm reading state
Dimension	680 *53 *7.5mm
Weight	120g
Working Temperature	-20°C~65°C
Storage Temperature	-40°C~80°C



Ci-RM8 8Ports UHF RFID Module



Ci-RM8 is an 8-antenna-port, UHF RFID Reader module supporting ISO18000-6C (EPC Class1 GEN2) Protocol. Designed with Impinj R2000 RFID chip. Supported by a suite of software, hardware, and antennas that deliver application and deployment flexibility, making installation and expansion easier than ever.

FEATURES

- ☑ ISO18000-6C (EPC Class1 GEN2) Protocol
- ☑ Impinj R2000 RFID Chip, Super Anti-Collision Function
- ☑ UART TTL Communication Port
- ☑ 15PIN 1.25mm Connector
- ☑ 8 SMA Ports, Connect 8 Antennas Outside
- ☑ C#, Java, Android SDK Available

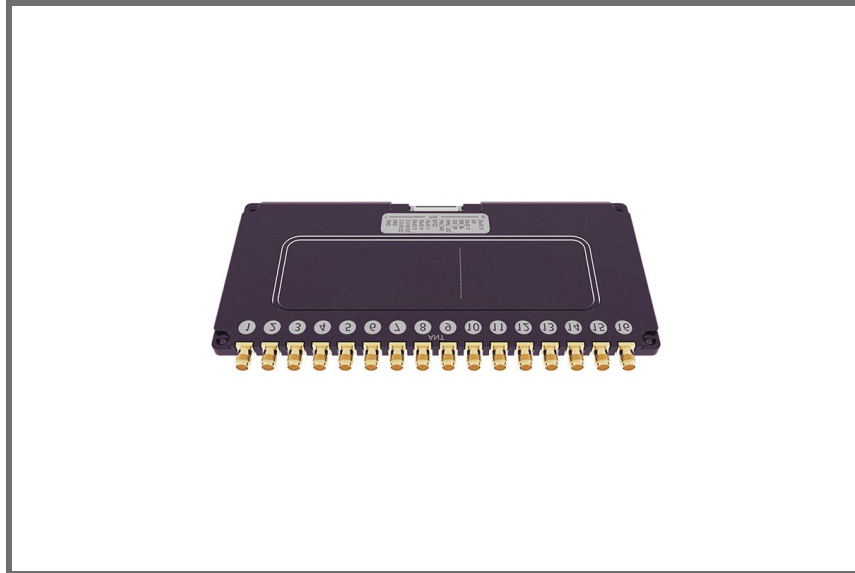


PARAMETERS

Operating Frequency	902-928MHz, 865-868MHz, RF band customized (optional)
Protocol	ISO18000-6C (EPC Class1 Gen2)
Modulation	DSB-ASK, PR-ASK
Antenna Port	8 SMA-Female, connect 8 antennas outside
Rf Output	0dBm~ 33dBm @50Ω load, 1dBm each step
Reading Range	0~15m (depends on antenna and tag type)
Writing Range	0~5m (depends on antenna and tag type)
Reading Speed	300pcs/s
Communication Port	UART TTL
Io Port	5GPIO
Power Supply	12V DC(5V~17V DC)
Power Consumption	4A/5V@30dBm reading state
Dimension	93 *80 *7.5mm
Weight	180g
Working Temperature	-20°C~65°C
Storage Temperature	-40°C~80°C



Ci-RM16 16 Ports UHF RFID Module



Ci-RM16 is a high-performance, 16 ports UHF RFID Reader module that expands the number of antennas by 16 per port, with IMPINJ R2000 RF chips, super anti-collision function. Expands the number of antennas connected to the same reader by a factor of 16. Supported by a suite of software, hardware, and antennas that deliver application and deployment flexibility, making installation and expansion easier than ever.

FEATURES

- ISO18000-6C (EPC Class1 GEN2) Protocol
- Impinj R2000 RFID Chip, Super Anti-Collision Function
- UART TTL Communication Port
- 15PIN 1.25mm Connector
- SMA Ports, Connect 16 Antennas Outside
- C#, Java, Android SDK Available



PARAMETERS

Operating Frequency	902-928MHz, 865-868MHz, RF band customized (optional)
Protocol	ISO18000-6C (EPC Class1 Gen2)
Modulation	DSB-ASK, PR-ASK
Antenna Port	16 SMA-Female, connect 16 antennas outside
Rf Output	0dBm~ 33dBm @50Ω load, 1dBm each step
Reading Range	0~15m (depends on antenna and tag type)
Writing Range	0~5m (depends on antenna and tag type)
Reading Speed	500pcs/s
Communication Port	UART TTL
Io Port	5 GPIO
Power Supply	12V DC(5V~17V DC)
Power Consumption	4A/5V@30dBm reading state
Dimension	178 *80 *7.5mm
Weight	200g
Working Temperature	-20°C~65°C
Storage Temperature	-40°C~80°C