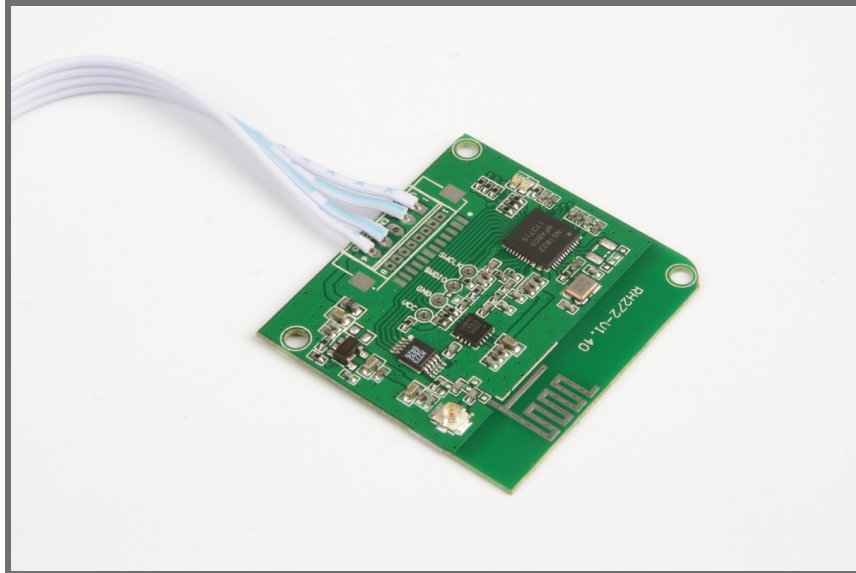




## Ci-RM272 Active RFID Module



Ci-RM272 active RFID module operates in 2.4Ghz ISM band, it is very small in size with high reading speed, flexible expansion, reliable data transmission, reading range can reach around 100meters. It is mainly embeded into other device like mobile data terminal for data capturing, sensor data acquisition and other system integration applications.

### FEATURES

- ☑ 2.4-2.48Ghz ISM Frequency Band
- ☑ TTL RS232 Communication Port
- ☑ 100m Reading Range Adjustable
- ☑ 3.6V-5V DC Power Supply
- ☑ Small in Size, Easy to Embed Into Other Device Like Handheld Device



## RF PARAMETER

<b>Operating Frequency</b>	2.400-2.48GHz
<b>Output Power</b>	Max +18dBm, step -2db, adjustable by software
<b>Receiving Sensitivity</b>	-96dBm
<b>Rssi(receive Signal Strength Indicator)</b>	-50dBm~-80dBm, accuracy+-1dB
<b>Antenna Port</b>	PCB antenna on board OR connect antenna outside (IPX connector)
<b>Port</b>	6Pin/1.25mm connector
<b>Communication Interface</b>	TTL RS232, baud rate 115200
<b>Io Port</b>	1 IO module enable
<b>Software Platform</b>	Communication protocol or API

## BASIC PARAMETER

<b>Tag Protocol</b>	Private, customizable
<b>Operating Mode</b>	Active operating mode
<b>Reading Range</b>	0-100m adjustable (depends on antenna type and environment)
<b>Reading Speed</b>	200pcs/s

## MECHANICAL & ELECTRICAL PERFORMANCE

<b>Dimensions</b>	36mm*34mm
<b>Weight</b>	20g
<b>Power Supply</b>	3.6-5V DC
<b>Power Consumption</b>	300mW
<b>Operating Temperature</b>	-40°C~+80°C
<b>Humidity</b>	5%~95% (non-condensing)



## WIRING INSTRUCTION

PIN	Function	Description
1	VCC	Power input, DC 3.6-5V
2,6	GND	Power GND
3	EN	Enable module, TTL high-level enable
4	RXD	UART RXD, TTL data receiving
5	TXD	UART TXD, TTL data sending