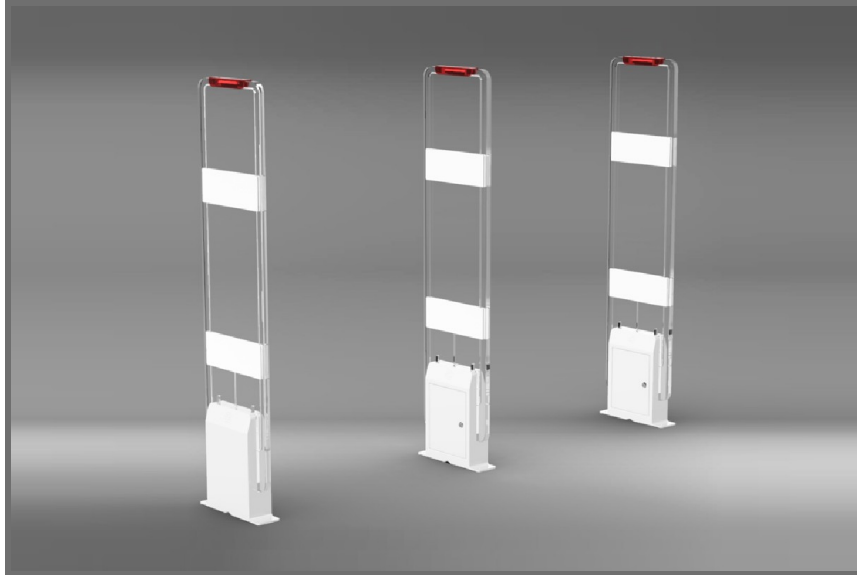




Ci-G910 UHF Gate System



Ci-G910 is an all-in-one UHF Gate System, it supports master-slave mode & multi-gates working together, adjustable reading distance, fast reading speed, high recognition and easy to installation.

APPLICATIONS

- Warehouse Gate System
- Library Management
- Documents Access Control System
- Access Control System
- Smart Retail System

FEATURES

- ISO18000-6C (EPC Class1 GEN2) Protocol
- Audible and Visual Anti-Theft Alarm



- Infrared Activation for Judging in and Out and Counting
- 2m Distance Adjustable, Special Antenna to Assure Access Control Area Reading Only
- Support Master-Slave Mode, Support Multi-Gates Working Together
- C++, C#, Java SDK Available

PARAMETERS

Operating Frequency	902 - 928MHz, 865 - 868MHz
Protocol	ISO18000-6C (EPC Class1 Gen2)
Antenna	Narrow beam antenna
Rf Output	0dBm~ 30dBm @50Ω load, 1dBm each step
Gate Width	Maximum 2.5m (0.8~1.2m gate width is suggested)
Gpio	1 relay output, 1 MOS output, 7 trigger input
Communication Port	RS232, Ethernet, RS485
Power Supply	110-240V AC Power, build-in power adaptor
Power Consumption	Stand 15W, Max 25W
Dimension	58mm*353mm*1481mm
Material	Acrylic and Aluminum alloy frame, lightweight but strong structure
Working Temperature	-20°C~ 50°C
Storage Temperature	-35°C~ 70°C